



## WHY JOIN THE LIBRARY



FREE



FUN



EDUCATIONAL

RECREATIONAL



## SERVICES

BOOKS

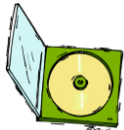


MAGAZINES

NEWSPAPERS



CD'S AND DVD'S



FAXING



PHOTOCOPYING



ELECTRONIC RESOURCES



(such as ebooks and audiobooks)



## HOW TO JOIN THE LIBRARY ADULT SECTION

Complete a registration form at your  
nearest library



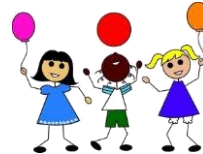
## REMEMBER YOU NEED

Barcoded ID. Book or passport  
Proof of postal address



## HOW TO JOIN THE LIBRARY CHILDREN'S SECTION

Children should be accompanied by  
a parent with their ID, proof of  
address, and child's birth certificate.



## How can you participate in holiday programmes?

All children are welcome and can  
attend the programmes free of  
charge.

## BRANCH

## TEL

|                            |           |
|----------------------------|-----------|
| ALGOA PARK LIBRARY         | 506-64248 |
| ALLANRIDGE LIBRARY         | 994-1314  |
| BOOYSEN PARK LIBRARY       | 506-64244 |
| CHATTY LIBRARY             | 506-64269 |
| COLCESTER MODULAR LIBRARY  | 506- 5461 |
| DESPATCH LIBRARY           | 506-1639  |
| ELUKHANYISWENI LIBRARY     | 994-1435  |
| GELVANDALE LIBRARY         | 452-3770  |
| KORSTEN LIBRARY            | 506-2668  |
| KUYGA MODULAR LIBRARY      | 506-64223 |
| KWADWESI LIBRARY           | 485-2517  |
| KWAMAGXAKI LIBRARY         | 463-1860  |
| KWANOBUHLE LIBRARY         | 506-2673  |
| KWAZAKHELE MODULAR LIBRARY | 506 5470  |
| LINTON GRANGE LIBRARY      | 360-1255  |
| AFRICANA LIBRARY           | 506-1987  |
| MOTHERWELL LIBRARY         | 506-64226 |
| NEW BRIGHTON LIBRARY       | 506-64255 |
| NEWTON PARK LIBRARY        | 365-1403  |
| NORTH END LIBRARY          | 506-64201 |
| UITENHAGE LIBRARY          | 994-1273  |
| WALMER LIBRARY             | 581-4111  |
| WEST END LIBRARY           | 506-64240 |
| ZWIDE LIBRARY              | 464-2287  |

Libraries have different opening and closing  
times. Contact your nearest library.

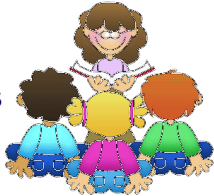
# THE CHILDREN'S SECTION IN THE LIBRARY IS FOR CHILDREN UP TO 13 YEARS OF AGE



It caters for:  
Early, Easy, Medium, Junior,  
&  
Early teenage readers

## SERVICES OFFERED

Lending of books, magazines, CDs, DVDs,  
Storytimes  
Holiday programmes  
Craft activities  
Reading Clubs  
Information sources (journals, magazines & audio books)



## TEEN CORNER

All libraries have this section to cater for teenagers.

## ON OFFER....

Books, CDs & DVDs  
(Fiction and Non Fiction)  
Teen magazines  
Reading clubs  
Reading Challenge  
Craft activities



## SPECIAL SERVICES

Mini Lib (Services to visually impaired at Elukhanyisweni Library, Motherwell Library and New Brighton Library)  
Special membership for educators and home schoolers  
Electronic resources (Downloadable ebooks and audiobooks)  
Community based outreach e.g. Kleinskool, Heatherbank, Amanzi, etc.  
Home for aged – regular visitors to various homes for aged throughout the Metro.  
Housebound services - by certain libraries



programmes  
e.g arts and crafts, Motherwell Rollers, Zwide Poetry Club, etc.



ENQUIRE AT YOUR LIBRARY



Nelson Mandela Bay Municipality  
Sports, Recreation, Arts & Culture:  
Libraries

